

# CERTIFICATE OF LOCATION OF GOVERNMENT CORNER

NORTHEAST Corner of Section 24, Township 108N, Range 39W

5th Principal Meridian, State of Minnesota, County of MURRAY

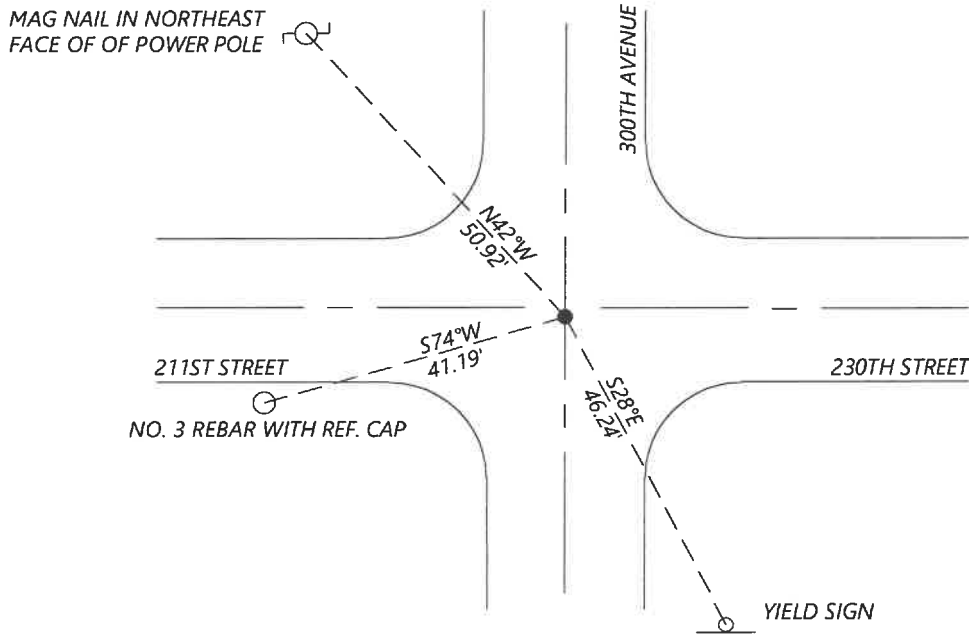
At the corner location shown on the sketch:

On 8/28/2020 found a 8X8X6 STONE WITH A 3/4" REBAR ON IT'S WEST SIDE  
DATE

left monument as found       lowered monument       removed monument (explain)

On \_\_\_\_\_ placed a \_\_\_\_\_  
DATE

### SKETCH OF REFERENCE TIES



N  
  
 N.T.S.

Statement of evidence for this corner location is on back of this page.

I hereby certify that this document was researched and prepared by me or under my direct supervision and that I am a licensed Land Surveyor under the laws of the State of Minnesota.

Signature

Date 6/17/2021 License No. 45874

Title:

- Land Surveyor       Professional Engineer  
 County Surveyor       County Engineer

OFFICE OF THE COUNTY RECORDER

County of Murray

I hereby certify that this document was filed in the Co.

Recorder's office at \_\_\_\_\_ M. on the \_\_\_\_\_ day of \_\_\_\_\_ A.D. 20 \_\_\_\_\_

County Recorder   
 by JUN 22 2021, Deputy

DOCUMENT NO. \_\_\_\_\_

**Statement of Evidence:**

Northeast Corner of Section 24, Township 108 North, Range 39 West, 5th Principal Meridian, Murray County, Minnesota.

*No GLO Notes.*

*Undated, Survey record for Section 13 shows the government corner was found. A distance of 2641.6ft is shown to the East Quarter corner and 2634.5ft is shown to the South Quarter corner.*

1900 Cottonwood County resurvey shows a distance of 2659ft to the West Quarter corner of Section 19 and 2642ft to the West Quarter corner of Section 18.

2020 September, Westwood Professional Services searched and found a stone measuring 8x8x6in with a No. 6 rebar without cap on its west side. The stone fits the position per the 1900 Cottonwood County resurvey very well. I accepted it as the corner and set reference ties.

Analysis of the recovered data, field evidence and survey measurements, indicates that the monument found is the correct perpetuation of this corner. For additional information concerning this corner please contact Westwood Professional Services.